

測試報告

Test Report

號碼(No.) : CE/2018/33016

日期(Date) : 2018/03/19

頁數(Page): 1 of 14

崑仲股份有限公司

KIN JOIN CO., LTD.

台中市大里區仁化路166號

NO. 166, RENHUA RD., DALI DIST., TAICHUNG CITY 41278, TAIWAN, (R. O. C.)



以下測試樣品係由申請廠商所提供及確認 (The following sample(s) was/were submitted and identified by/on behalf of the applicant as) :

送樣廠商(Sample Submitted By) : 崑仲股份有限公司 (KIN JOIN CO., LTD.)
樣品名稱(Sample Description) : THERMOPLASTIC ELASTOMERS (TPR) (熱可塑橡膠)
收件日期(Sample Receiving Date) : 2018/03/12
測試期間(Testing Period) : 2018/03/12 TO 2018/03/19

測試需求(Test Requested) :

- (1) 依據客戶指定, 參考RoHS 2011/65/EU Annex II及其修訂指令(EU) 2015/863測試鎘、鉛、汞、六價鉻、多溴聯苯、多溴聯苯醚, DBP, BBP, DEHP, DIBP. (As specified by client, with reference to RoHS 2011/65/EU Annex II and amending Directive (EU) 2015/863 to determine Cadmium, Lead, Mercury, Cr(VI), PBBs, PBDEs, DBP, BBP, DEHP, DIBP contents in the submitted sample(s).)
- (2) 依據客戶指定, 檢測 PAHs 及其他測項. (As specified by client, to test PAHs and other item(s).)

測試結果(Test Results) : 請參閱下一頁 (Please refer to following pages).

結論(Conclusion) : (2) 根據客戶所提供的樣品, 18項多環芳香烴測試結果符合德國產品安全委員會(AfPS) GS PAHs第 1 類之限值要求. (Based upon the performed tests on the submitted sample(s), the test results of PAHs (18 items) comply with the limits of PAHs requirement (Category 1) as set by German Committee on Product Safety (AfPS) GS PAHs.)


Troy Chang / Manager - Tech
Signed for and on behalf of
SGS TAIWAN LTD.
Chemical Laboratory - Taipei



測試報告

號碼(No.) : CE/2018/33016

日期(Date) : 2018/03/19

頁數(Page): 2 of 14

Test Report

崑崙股份有限公司

KIN JOIN CO., LTD.

台中市大里區仁化路166號

NO. 166, RENHUA RD., DALI DIST., TAICHUNG CITY 41278, TAIWAN, (R. O. C.)



測試結果(Test Results)

測試部位(PART NAME)No. 1 : 白色橡膠粒 (WHITE RUBBER PELLETS)

測試項目 (Test Items)	單位 (Unit)	測試方法 (Method)	方法偵測 極限值 (MDL)	結果 (Result)
				No. 1
鎘 / Cadmium (Cd)	mg/kg	參考IEC 62321-5 (2013), 以感應耦合 電漿原子發射光譜儀檢測. / With reference to IEC 62321-5 (2013) and performed by ICP-AES.	2	n. d.
鉛 / Lead (Pb)	mg/kg		2	n. d.
汞 / Mercury (Hg)	mg/kg		2	n. d.
六價鉻 / Hexavalent Chromium Cr(VI) (◆)	mg/kg	參考IEC 62321-4 (2013), 以感應耦合 電漿原子發射光譜儀檢測. / With reference to IEC 62321-4 (2013) and performed by ICP-AES.	8	n. d.
多溴聯苯總和 / Sum of PBBs	mg/kg	參考IEC 62321-7-2 (2017), 以UV-VIS 檢測; 參考IEC 62321-5 (2013), 以 ICP-AES檢測. / With reference to IEC 62321-7-2 (2017) and performed by UV-VIS. ; With reference to IEC 62321-5 (2013) and performed by ICP-AES.	-	n. d.
一溴聯苯 / Monobromobiphenyl	mg/kg		5	n. d.
二溴聯苯 / Dibromobiphenyl	mg/kg		5	n. d.
三溴聯苯 / Tribromobiphenyl	mg/kg		5	n. d.
四溴聯苯 / Tetrabromobiphenyl	mg/kg		5	n. d.
五溴聯苯 / Pentabromobiphenyl	mg/kg		5	n. d.
六溴聯苯 / Hexabromobiphenyl	mg/kg		5	n. d.
七溴聯苯 / Heptabromobiphenyl	mg/kg		5	n. d.
八溴聯苯 / Octabromobiphenyl	mg/kg		5	n. d.
九溴聯苯 / Nonabromobiphenyl	mg/kg		5	n. d.
十溴聯苯 / Decabromobiphenyl	mg/kg	5	n. d.	

This document is issued by the Company subject to its General Conditions of Service printed overleaf, available on request or accessible at <http://www.sgs.com/en/Terms-and-Conditions.aspx> and, for electronic format documents, subject to Terms and Conditions for Electronic Documents at <http://www.sgs.com/en/Terms-and-Conditions/Termse-Document.aspx>. Attention is drawn to the limitation of liability, indemnification and jurisdiction issues defined therein. Any holder of this document is advised that information contained hereon reflects the Company's findings at the time of its intervention only and within the limits of client's instruction, if any. The Company's sole responsibility is to its Client and this document does not exonerate parties to a transaction from exercising all their rights and obligations under the transaction documents. This document cannot be reproduced, except in full, without prior written approval of the Company. Any unauthorized alteration, forgery or falsification of the content or appearance of this document is unlawful and offenders may be prosecuted to the fullest extent of the law. Unless otherwise stated the results shown in this test report refer only to the sample(s) tested.

測試報告

號碼(No.) : CE/2018/33016

日期(Date) : 2018/03/19

頁數(Page): 3 of 14

Test Report

崑崙股份有限公司



KIN JOIN CO., LTD.

台中市大里區仁化路166號

NO. 166, RENHUA RD., DALI DIST., TAICHUNG CITY 41278, TAIWAN, (R. O. C.)

測試項目 (Test Items)	單位 (Unit)	測試方法 (Method)	方法偵測 極限值 (MDL)	結果 (Result)
				No. 1
多溴聯苯醚總和 / Sum of PBDEs	mg/kg	參考IEC 62321-6 (2015), 以氣相層析/質譜儀檢測. / With reference to IEC 62321-6 (2015) and performed by GC/MS.	-	n. d.
一溴聯苯醚 / Monobromodiphenyl ether	mg/kg		5	n. d.
二溴聯苯醚 / Dibromodiphenyl ether	mg/kg		5	n. d.
三溴聯苯醚 / Tribromodiphenyl ether	mg/kg		5	n. d.
四溴聯苯醚 / Tetrabromodiphenyl ether	mg/kg		5	n. d.
五溴聯苯醚 / Pentabromodiphenyl ether	mg/kg		5	n. d.
六溴聯苯醚 / Hexabromodiphenyl ether	mg/kg		5	n. d.
七溴聯苯醚 / Heptabromodiphenyl ether	mg/kg		5	n. d.
八溴聯苯醚 / Octabromodiphenyl ether	mg/kg		5	n. d.
九溴聯苯醚 / Nonabromodiphenyl ether	mg/kg		5	n. d.
十溴聯苯醚 / Decabromodiphenyl ether	mg/kg	5	n. d.	
鄰苯二甲酸丁苯甲酯 / BBP (Butyl Benzyl phthalate) (CAS No. : 85-68-7)	mg/kg	參考IEC 62321-8 (2017), 以氣相層析儀/質譜儀檢測. / With reference to IEC 62321-8 (2017). Analysis was performed by GC/MS.	50	n. d.
鄰苯二甲酸二丁酯 / DBP (Dibutyl phthalate) (CAS No. : 84-74-2)	mg/kg		50	n. d.
鄰苯二甲酸二(2-乙基己基)酯 / DEHP (Di-(2-ethylhexyl) phthalate) (CAS No. : 117-81-7)	mg/kg		50	n. d.
鄰苯二甲酸二異丁酯 / DIBP (Di-isobutyl phthalate) (CAS No. : 84-69-5)	mg/kg		50	n. d.
鄰苯二甲酸二異癸酯 / DIDP (Di-isodecyl phthalate) (CAS No. : 26761-40-0; 68515-49-1)	mg/kg		50	n. d.
鄰苯二甲酸二異壬酯 / DINP (Di-isononyl phthalate) (CAS No. : 28553-12-0; 68515-48-0)	mg/kg		50	n. d.
鄰苯二甲酸二正辛酯 / DNOP (Di-n-octyl phthalate) (CAS No. : 117-84-0)	mg/kg		50	n. d.

This document is issued by the Company subject to its General Conditions of Service printed overleaf, available on request or accessible at <http://www.sgs.com/en/Terms-and-Conditions.aspx> and, for electronic format documents, subject to Terms and Conditions for Electronic Documents at <http://www.sgs.com/en/Terms-and-Conditions/Termse-Document.aspx>. Attention is drawn to the limitation of liability, indemnification and jurisdiction issues defined therein. Any holder of this document is advised that information contained hereon reflects the Company's findings at the time of its intervention only and within the limits of client's instruction, if any. The Company's sole responsibility is to its Client and this document does not exonerate parties to a transaction from exercising all their rights and obligations under the transaction documents. This document cannot be reproduced, except in full, without prior written approval of the Company. Any unauthorized alteration, forgery or falsification of the content or appearance of this document is unlawful and offenders may be prosecuted to the fullest extent of the law. Unless otherwise stated the results shown in this test report refer only to the sample(s) tested.

測試報告

號碼(No.) : CE/2018/33016

日期(Date) : 2018/03/19

頁數(Page): 4 of 14

Test Report

崑仲股份有限公司



KIN JOIN CO., LTD.

台中市大里區仁化路166號

NO. 166, RENHUA RD., DALI DIST., TAICHUNG CITY 41278, TAIWAN, (R. O. C.)

測試項目 (Test Items)	單位 (Unit)	測試方法 (Method)	方法偵測 極限值 (MDL)	結果 (Result)
				No. 1
多環芳香烴 / Polycyclic Aromatic Hydrocarbons (PAHs)				
芘 / Acenaphthene (CAS No. : 83-32-9)	mg/kg	參考AfPS GS 2014:01 PAK, 以氣相層析/質譜儀檢測. / With reference to AfPS GS 2014:01 PAK. Analysis was performed by GC/MS.	0.2	n. d.
芘烯 / Acenaphthylene (CAS No. : 208-96-8)	mg/kg		0.2	n. d.
蒽 / Anthracene (CAS No. : 120-12-7)	mg/kg		0.2	n. d.
苯駢蒽 / Benzo[a]anthracene (CAS No. : 56-55-3)	mg/kg		0.2	n. d.
苯駢(a)芘 / Benzo[a]pyrene (CAS No. : 50-32-8)	mg/kg		0.2	n. d.
苯(b)苯駢芘 / Benzo[b]fluoranthene (CAS No. : 205-99-2)	mg/kg		0.2	n. d.
苯駢芘 / Benzo[g, h, i]perylene (CAS No. : 191-24-2)	mg/kg		0.2	n. d.
苯(k)苯駢芘 / Benzo[k]fluoranthene (CAS No. : 207-08-9)	mg/kg		0.2	n. d.
Chrysene (CAS No. : 218-01-9)	mg/kg		0.2	n. d.
二苯駢蒽 / Dibenzo[a, h]anthracene (CAS No. : 53-70-3)	mg/kg		0.2	n. d.
苯駢芘 / Fluoranthene (CAS No. : 206-44-0)	mg/kg		0.2	n. d.
芘 / Fluorene (CAS No. : 86-73-7)	mg/kg		0.2	n. d.
茚酮芘 / Indeno[1, 2, 3-c, d] pyrene (CAS No. : 193-39-5)	mg/kg		0.2	n. d.
萘 / Naphthalene (CAS No. : 91-20-3)	mg/kg		0.2	n. d.
菲 / Phenanthrene (CAS No. : 85-01-8)	mg/kg		0.2	n. d.
芘 / Pyrene (CAS No. : 129-00-0)	mg/kg		0.2	n. d.
苯(j)苯駢芘 / Benzo[j]fluoranthene (CAS No. : 205-82-3)	mg/kg		0.2	n. d.
苯駢(e)芘 / Benzo[e]pyrene (CAS No. : 192-97-2)	mg/kg		0.2	n. d.
多環芳香烴18項總和 / Sum of 18 PAHs	mg/kg		-	n. d.

This document is issued by the Company subject to its General Conditions of Service printed overleaf, available on request or accessible at <http://www.sgs.com/en/Terms-and-Conditions.aspx> and, for electronic format documents, subject to Terms and Conditions for Electronic Documents at <http://www.sgs.com/en/Terms-and-Conditions/Termse-Documents.aspx>. Attention is drawn to the limitation of liability, indemnification and jurisdiction issues defined therein. Any holder of this document is advised that information contained hereon reflects the Company's findings at the time of its intervention only and within the limits of client's instruction, if any. The Company's sole responsibility is to its Client and this document does not exonerate parties to a transaction from exercising all their rights and obligations under the transaction documents. This document cannot be reproduced, except in full, without prior written approval of the Company. Any unauthorized alteration, forgery or falsification of the content or appearance of this document is unlawful and offenders may be prosecuted to the fullest extent of the law. Unless otherwise stated the results shown in this test report refer only to the sample(s) tested.

測試報告

號碼(No.) : CE/2018/33016

日期(Date) : 2018/03/19

頁數(Page): 5 of 14

Test Report

崑仲股份有限公司



KIN JOIN CO., LTD.

台中市大里區仁化路166號

NO. 166, RENHUA RD., DALI DIST., TAICHUNG CITY 41278, TAIWAN, (R. O. C.)

測試項目 (Test Items)	單位 (Unit)	測試方法 (Method)	方法偵測 極限值 (MDL)	結果 (Result)
				No. 1
鹵素 / Halogen				
鹵素 (氟) / Halogen-Fluorine (F) (CAS No. : 14762-94-8)	mg/kg	參考BS EN 14582 (2016), 以離子層析儀分析. / With reference to BS EN 14582 (2016). Analysis was performed by IC.	50	n. d.
鹵素 (氯) / Halogen-Chlorine (Cl) (CAS No. : 22537-15-1)	mg/kg		50	n. d.
鹵素 (溴) / Halogen-Bromine (Br) (CAS No. : 10097-32-2)	mg/kg		50	n. d.
鹵素 (碘) / Halogen-Iodine (I) (CAS No. : 14362-44-8)	mg/kg		50	n. d.
三丁基錫 / Tributyl Tin (TBT)	mg/kg	參考ISO 17353 (2004), 以氣相層析儀 / 火焰光度偵測器檢測. / With reference to ISO 17353 (2004). Analysis was performed by GC/FPD.	0.03	n. d.
三苯基錫 / Triphenyl Tin (TphT)	mg/kg		0.03	n. d.
氧化雙三丁基錫 / Bis(tributyltin)oxide (TBTO)***(CAS No. : 56-35-9)	mg/kg		-	n. d.
二丁基錫 / Dibutyl Tin (DBT)	mg/kg		0.03	n. d.
二辛基錫 / Dioctyl Tin (DOT)	mg/kg		0.03	n. d.

This document is issued by the Company subject to its General Conditions of Service printed overleaf, available on request or accessible at <http://www.sgs.com/en/Terms-and-Conditions.aspx> and, for electronic format documents, subject to Terms and Conditions for Electronic Documents at <http://www.sgs.com/en/Terms-and-Conditions/Termse-Documents.aspx>. Attention is drawn to the limitation of liability, indemnification and jurisdiction issues defined therein. Any holder of this document is advised that information contained hereon reflects the Company's findings at the time of its intervention only and within the limits of client's instruction, if any. The Company's sole responsibility is to its Client and this document does not exonerate parties to a transaction from exercising all their rights and obligations under the transaction documents. This document cannot be reproduced, except in full, without prior written approval of the Company. Any unauthorized alteration, forgery or falsification of the content or appearance of this document is unlawful and offenders may be prosecuted to the fullest extent of the law. Unless otherwise stated the results shown in this test report refer only to the sample(s) tested.

測試報告

Test Report

號碼(No.) : CE/2018/33016

日期(Date) : 2018/03/19

頁數(Page): 6 of 14

崑仲股份有限公司

KIN JOIN CO., LTD.

台中市大里區仁化路166號

NO. 166, RENHUA RD., DALI DIST., TAICHUNG CITY 41278, TAIWAN, (R. O. C.)



備註(Note) :

1. mg/kg = ppm ; 0.1wt% = 1000ppm
2. n. d. = Not Detected (未檢出)
3. MDL = Method Detection Limit (方法偵測極限值)
4. "-" = Not Regulated (無規格值)
5. (◆) :
若鉻含量小於六價鉻之方法偵測極限值，則六價鉻為n. d.，不須再測試六價鉻。
The result of Cr(VI) is "n. d." as the result of Chromium (Cr) is less than the MDL of Cr(VI), and confirmation test of Cr(VI) is not required.
若鉻含量未小於六價鉻之方法偵測極限值，需進行六價鉻測試。
If the Chromium (Cr) content is not less than the MDL of Cr(VI), confirmation test of Cr(VI) is required.
6. ***: 該物質是由三丁基錫之測試結果計算得知。其MDL是針對三丁基錫之評估。(The substance was calculated by the test results of Tributyl Tin. The MDL was evaluated for Tributyl Tin.)
7. 參數換算表 / Parameter Conversion Table : http://twap.sgs.com/sgrsts/chn/download-REACH_tw.asp

測試報告

號碼(No.) : CE/2018/33016

日期(Date) : 2018/03/19

頁數(Page): 7 of 14

Test Report

崑崙股份有限公司

KIN JOIN CO., LTD.

台中市大里區仁化路166號

NO. 166, RENHUA RD., DALI DIST., TAICHUNG CITY 41278, TAIWAN, (R. O. C.)



△ 德國產品安全委員會(AfPS) GS PAHs 要求 /

AfPS (German commission for Product Safety): GS PAHs requirements

項目 (Parameter)	第1類(Category 1)	第2類(Category 2)		第3類(Category 3)	
	意圖放入嘴內的材料或玩具會與皮膚有所接觸(超過30秒)。 (Material indented to be put in the mouth or toys with intended skin contact (longer than 30 s).)	不屬於第1類的材料並可預見與皮膚接觸逾30秒(長期或經常與皮膚接觸)。 (Materials not falling under category 1 with foreseeable contact to skin for longer than 30 seconds (long-term skin or frequent contact).)		可預見與皮膚接觸短於30秒(短期與皮膚接觸), 以及不屬於第1類或第2類的材料。 (Materials not falling under category 1 or 2 with foreseeable contact to skin for less than 30 seconds (short-term skin contact).)	
		列於2009/48/EC之玩具 (Toy under 2009/48/EC)	列於德國產品安全法之其他產品 (Other products under ProdSG)	列於2009/48/EC之玩具 (Toy under 2009/48/EC)	列於德國產品安全法之其他產品 (Other products under ProdSG)
Naphthalene	< 1	< 2		< 10	
Acenaphthylene	< 1 Sum	< 5 Sum	< 10 Sum	< 20 Sum	< 50 Sum
Acenaphthene					
Fluorene					
Phenanthrene					
Anthracene					
Fluoranthene					
Pyrene					
Benzo[a]anthracene					
Chrysene	< 0.2	< 0.2	< 0.5	< 0.5	< 1
Benzo[b]fluoranthene	< 0.2	< 0.2	< 0.5	< 0.5	< 1
Benzo[j]fluoranthene	< 0.2	< 0.2	< 0.5	< 0.5	< 1
Benzo[k]fluoranthene	< 0.2	< 0.2	< 0.5	< 0.5	< 1
Benzo[a]pyrene	< 0.2	< 0.2	< 0.5	< 0.5	< 1
Benzo[e]pyrene	< 0.2	< 0.2	< 0.5	< 0.5	< 1
Indeno[1,2,3-c,d] pyrene	< 0.2	< 0.2	< 0.5	< 0.5	< 1
Dibenzo[a,h]anthracene	< 0.2	< 0.2	< 0.5	< 0.5	< 1
Benzo[g,h,i]perylene	< 0.2	< 0.2	< 0.5	< 0.5	< 1
18項PAH總濃度 (Sum of 18 PAH)	< 1	< 5	< 10	< 20	< 50

單位(Unit) : mg/kg

This document is issued by the Company subject to its General Conditions of Service printed overleaf, available on request or accessible at <http://www.sgs.com/en/Terms-and-Conditions.aspx> and, for electronic format documents, subject to Terms and Conditions for Electronic Documents at <http://www.sgs.com/en/Terms-and-Conditions/Termse-Document.aspx>. Attention is drawn to the limitation of liability, indemnification and jurisdiction issues defined therein. Any holder of this document is advised that information contained hereon reflects the Company's findings at the time of its intervention only and within the limits of client's instruction, if any. The Company's sole responsibility is to its Client and this document does not exonerate parties to a transaction from exercising all their rights and obligations under the transaction documents. This document cannot be reproduced, except in full, without prior written approval of the Company. Any unauthorized alteration, forgery or falsification of the content or appearance of this document is unlawful and offenders may be prosecuted to the fullest extent of the law. Unless otherwise stated the results shown in this test report refer only to the sample(s) tested.

測試報告 Test Report

號碼(No.) : CE/2018/33016

日期(Date) : 2018/03/19

頁數(Page): 8 of 14

崑崙股份有限公司

KIN JOIN CO., LTD.

台中市大里區仁化路166號

NO. 166, RENHUA RD., DALI DIST., TAICHUNG CITY 41278, TAIWAN, (R. O. C.)

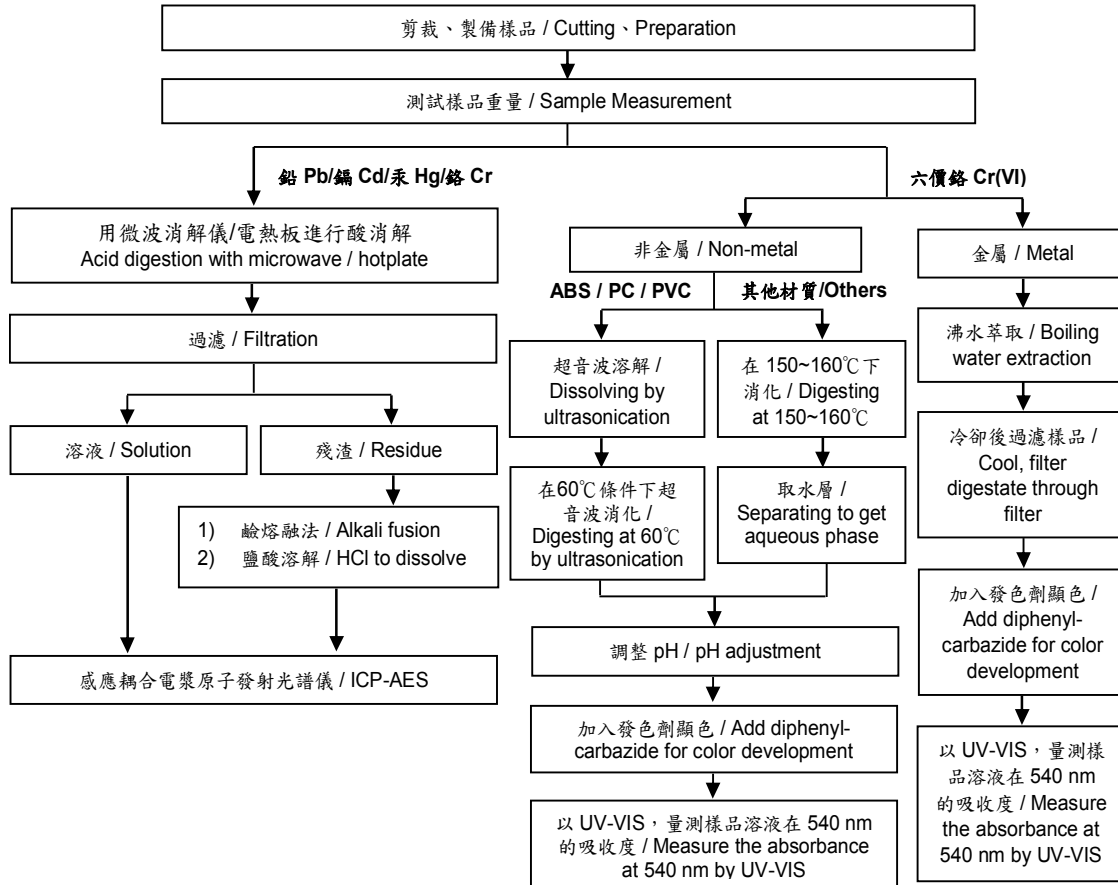


重金屬流程圖 / Analytical flow chart of Heavy Metal

根據以下的流程圖之條件，樣品已完全溶解。(六價鉻測試方法除外)

These samples were dissolved totally by pre-conditioning method according to below flow chart. (Cr⁶⁺ test method excluded)

- 測試人員：王志瑋 / Technician : JR Wang
- 測試負責人：張啟興 / Supervisor: Troy Chang



測試報告 Test Report

號碼(No.) : CE/2018/33016

日期(Date) : 2018/03/19

頁數(Page): 9 of 14

崑仲股份有限公司

KIN JOIN CO., LTD.

台中市大里區仁化路166號

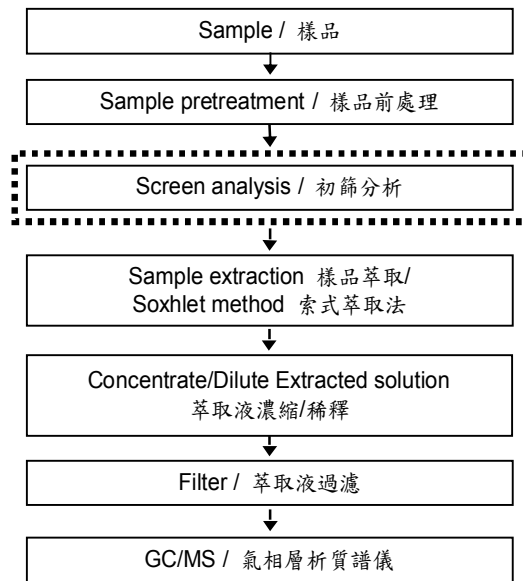
NO. 166, RENHUA RD., DALI DIST., TAICHUNG CITY 41278, TAIWAN, (R. O. C.)



多溴聯苯/多溴聯苯醚分析流程圖 / Analytical flow chart - PBB/PBDE

- 測試人員：涂雅苓 / Technician: Yaling Tu
- 測試負責人：張啟興 / Supervisor: Troy Chang

初次測試程序 / First testing process —————>
 選擇性篩檢程序 / Optional screen process>
 確認程序 / Confirmation process - - ->



This document is issued by the Company subject to its General Conditions of Service printed overleaf, available on request or accessible at <http://www.sgs.com/en/Terms-and-Conditions.aspx> and, for electronic format documents, subject to Terms and Conditions for Electronic Documents at <http://www.sgs.com/en/Terms-and-Conditions/Termse-Documents.aspx>. Attention is drawn to the limitation of liability, indemnification and jurisdiction issues defined therein. Any holder of this document is advised that information contained hereon reflects the Company's findings at the time of its intervention only and within the limits of client's instruction, if any. The Company's sole responsibility is to its Client and this document does not exonerate parties to a transaction from exercising all their rights and obligations under the transaction documents. This document cannot be reproduced, except in full, without prior written approval of the Company. Any unauthorized alteration, forgery or falsification of the content or appearance of this document is unlawful and offenders may be prosecuted to the fullest extent of the law. Unless otherwise stated the results shown in this test report refer only to the sample(s) tested.

測試報告 Test Report

號碼(No.) : CE/2018/33016

日期(Date) : 2018/03/19

頁數(Page): 10 of 14

崑仲股份有限公司

KIN JOIN CO., LTD.

台中市大里區仁化路166號

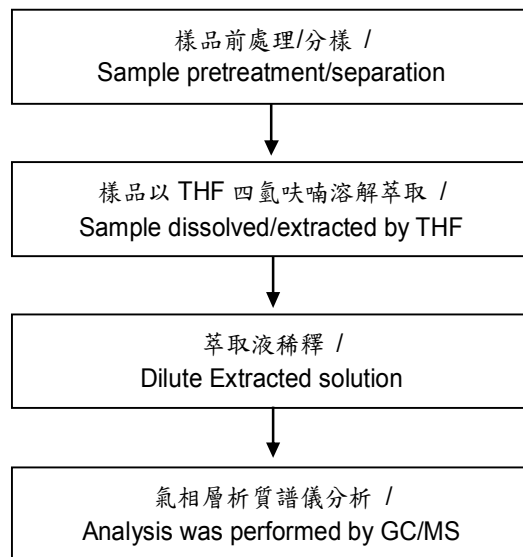
NO. 166, RENHUA RD., DALI DIST., TAICHUNG CITY 41278, TAIWAN, (R. O. C.)



可塑劑分析流程圖 / Analytical flow chart - Phthalate

- 測試人員：徐毓明 / Technician: Andy Hsu
- 測試負責人：張啟興 / Supervisor : Troy Chang

【測試方法/Test method: IEC 62321-8】



This document is issued by the Company subject to its General Conditions of Service printed overleaf, available on request or accessible at <http://www.sgs.com/en/Terms-and-Conditions.aspx> and, for electronic format documents, subject to Terms and Conditions for Electronic Documents at <http://www.sgs.com/en/Terms-and-Conditions/Termse-Document.aspx>. Attention is drawn to the limitation of liability, indemnification and jurisdiction issues defined therein. Any holder of this document is advised that information contained hereon reflects the Company's findings at the time of its intervention only and within the limits of client's instruction, if any. The Company's sole responsibility is to its Client and this document does not exonerate parties to a transaction from exercising all their rights and obligations under the transaction documents. This document cannot be reproduced, except in full, without prior written approval of the Company. Any unauthorized alteration, forgery or falsification of the content or appearance of this document is unlawful and offenders may be prosecuted to the fullest extent of the law. Unless otherwise stated the results shown in this test report refer only to the sample(s) tested.

測試報告 Test Report

號碼(No.) : CE/2018/33016

日期(Date) : 2018/03/19

頁數(Page): 11 of 14

崑仲股份有限公司

KIN JOIN CO., LTD.

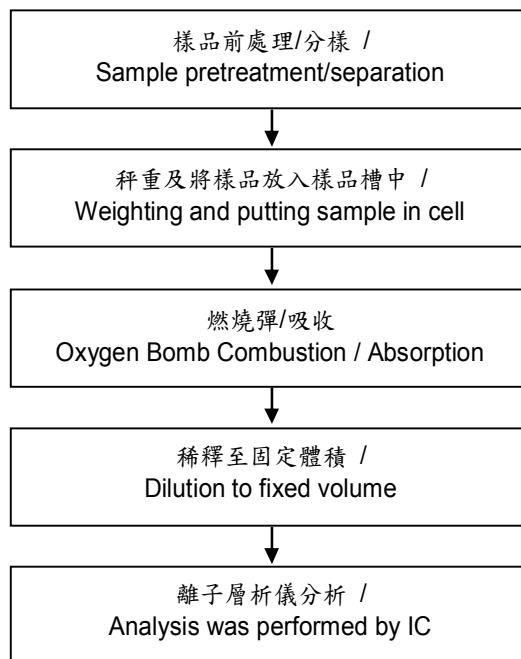
台中市大里區仁化路166號

NO. 166, RENHUA RD., DALI DIST., TAICHUNG CITY 41278, TAIWAN, (R. O. C.)



鹵素分析流程圖 / Analytical flow chart - Halogen

- 測試人員：陳恩臻 / Technician: Rita Chen
- 測試負責人：張啟興 / Supervisor: Troy Chang



This document is issued by the Company subject to its General Conditions of Service printed overleaf, available on request or accessible at <http://www.sgs.com/en/Terms-and-Conditions.aspx> and, for electronic format documents, subject to Terms and Conditions for Electronic Documents at <http://www.sgs.com/en/Terms-and-Conditions/Termse-Document.aspx>. Attention is drawn to the limitation of liability, indemnification and jurisdiction issues defined therein. Any holder of this document is advised that information contained hereon reflects the Company's findings at the time of its intervention only and within the limits of client's instruction, if any. The Company's sole responsibility is to its Client and this document does not exonerate parties to a transaction from exercising all their rights and obligations under the transaction documents. This document cannot be reproduced, except in full, without prior written approval of the Company. Any unauthorized alteration, forgery or falsification of the content or appearance of this document is unlawful and offenders may be prosecuted to the fullest extent of the law. Unless otherwise stated the results shown in this test report refer only to the sample(s) tested.

測試報告 Test Report

號碼(No.) : CE/2018/33016

日期(Date) : 2018/03/19

頁數(Page): 12 of 14

崑崙股份有限公司

KIN JOIN CO., LTD.

台中市大里區仁化路166號

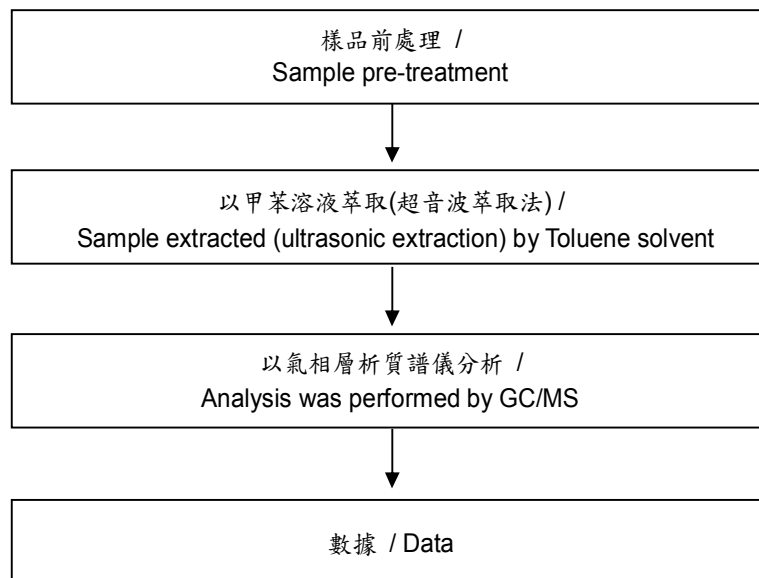
NO. 166, RENHUA RD., DALI DIST., TAICHUNG CITY 41278, TAIWAN, (R. O. C.)



多環芳香煙分析流程圖 /

Analytical flow chart - PAHs (Polycyclic Aromatic Hydrocarbons)

- 測試人員：涂雅苓 / Technician: Yaling Tu
- 測試負責人：張啟興 / Supervisor: Troy Chang



This document is issued by the Company subject to its General Conditions of Service printed overleaf, available on request or accessible at <http://www.sgs.com/en/Terms-and-Conditions.aspx> and, for electronic format documents, subject to Terms and Conditions for Electronic Documents at <http://www.sgs.com/en/Terms-and-Conditions/Termse-Document.aspx>. Attention is drawn to the limitation of liability, indemnification and jurisdiction issues defined therein. Any holder of this document is advised that information contained hereon reflects the Company's findings at the time of its intervention only and within the limits of client's instruction, if any. The Company's sole responsibility is to its Client and this document does not exonerate parties to a transaction from exercising all their rights and obligations under the transaction documents. This document cannot be reproduced, except in full, without prior written approval of the Company. Any unauthorized alteration, forgery or falsification of the content or appearance of this document is unlawful and offenders may be prosecuted to the fullest extent of the law. Unless otherwise stated the results shown in this test report refer only to the sample(s) tested.

測試報告 Test Report

號碼(No.) : CE/2018/33016

日期(Date) : 2018/03/19

頁數(Page): 13 of 14

崑仲股份有限公司

KIN JOIN CO., LTD.

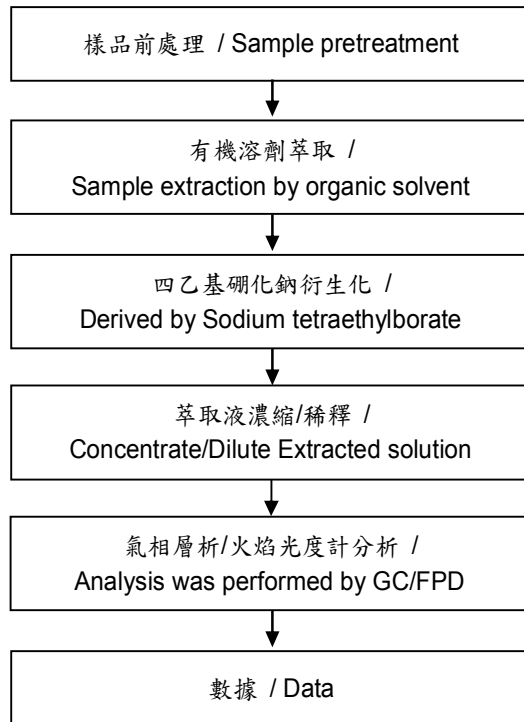
台中市大里區仁化路166號

NO. 166, RENHUA RD., DALI DIST., TAICHUNG CITY 41278, TAIWAN, (R. O. C.)



有機錫分析流程圖 / Analytical flow chart - Organic-Tin

- 測試人員：涂雅芬 / Technician: Yaling Tu
- 測試負責人：張啟興 / Supervisor: Troy Chang



This document is issued by the Company subject to its General Conditions of Service printed overleaf, available on request or accessible at <http://www.sgs.com/en/Terms-and-Conditions.aspx> and, for electronic format documents, subject to Terms and Conditions for Electronic Documents at <http://www.sgs.com/en/Terms-and-Conditions/Termse-Document.aspx>. Attention is drawn to the limitation of liability, indemnification and jurisdiction issues defined therein. Any holder of this document is advised that information contained hereon reflects the Company's findings at the time of its intervention only and within the limits of client's instruction, if any. The Company's sole responsibility is to its Client and this document does not exonerate parties to a transaction from exercising all their rights and obligations under the transaction documents. This document cannot be reproduced, except in full, without prior written approval of the Company. Any unauthorized alteration, forgery or falsification of the content or appearance of this document is unlawful and offenders may be prosecuted to the fullest extent of the law. Unless otherwise stated the results shown in this test report refer only to the sample(s) tested.

測試報告

Test Report

號碼(No.) : CE/2018/33016

日期(Date) : 2018/03/19

頁數(Page): 14 of 14

崑崙股份有限公司

KIN JOIN CO., LTD.

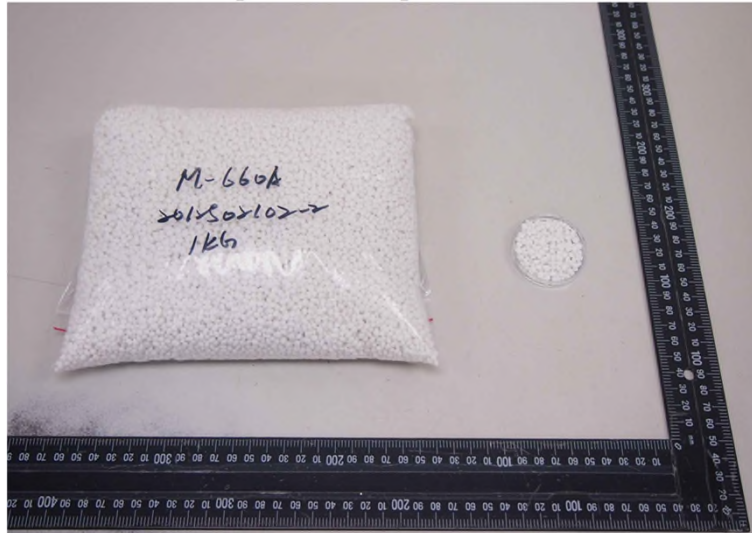
台中市大里區仁化路166號

NO. 166, RENHUA RD., DALI DIST., TAICHUNG CITY 41278, TAIWAN, (R. O. C.)



* 照片中如有箭頭標示，則表示為實際檢測之樣品/部位。*
(The tested sample / part is marked by an arrow if it's shown on the photo.)

CE/2018/33016



** 報告結尾 (End of Report) **